

About

Through this document, users can upgrade the MIDI HUB-3 box by themselves. When DOREMiDi has a new firmware, it will be announced on the official website. Follow the official latest news:

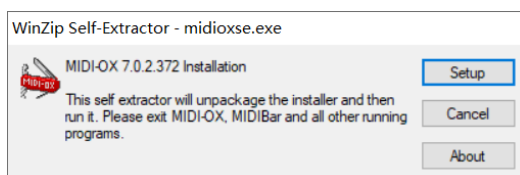
MR-1: <http://www.doremidi.cn/h-pd-23.html>

UR-1: <http://www.doremidi.cn/h-pd-22.html>

The following takes the operation of MR-1 as an example.

Step 1: Install the firmware upgrade tool:

- Installation environment: Windows 7 or newer version of Windows system(Preferably Win10).
- Double-click "midioxse.exe" software to install.



Step 2: Connect MR-1 to the computer:

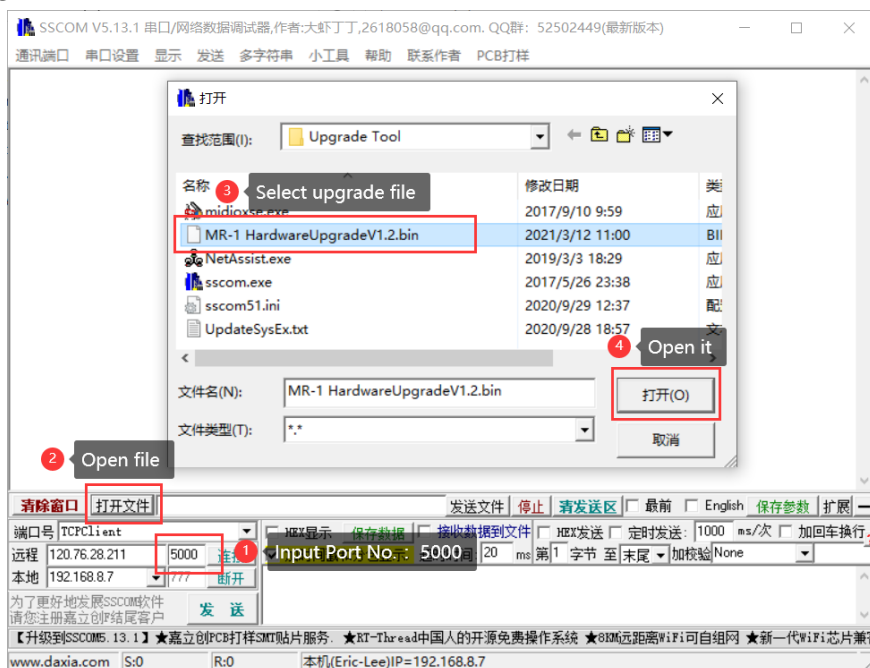
- Supply power to MR-1, connect to LAN, and connect to computer.

Refer to [DOREMiDi Network MIDI Config Instructions V1.0.pdf](#)



Step 3: configure the upgrade file (preparation for the sixth step):

- Open the "sscom.exe" software, configure the network port number to "5000", and select the upgrade file.



- After opening the upgrade file, as shown in the figure:



Step4: Configure the "NetAssist.exe" software (preparation for the fifth step)

- Open "NetAssist.exe", if prompted to download the software, press "Cancel".

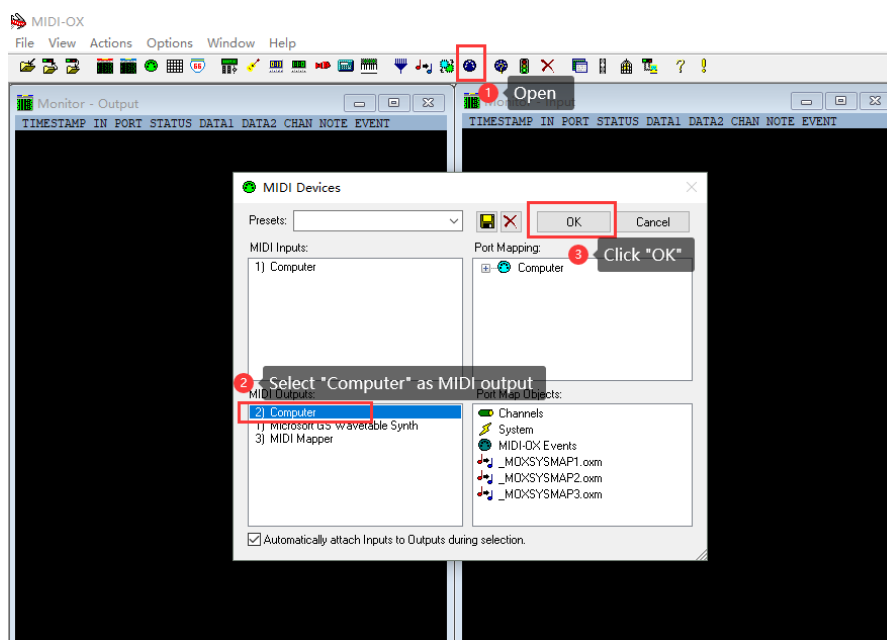


- Configure the port number for "NetAssist.exe" as shown in the figure:

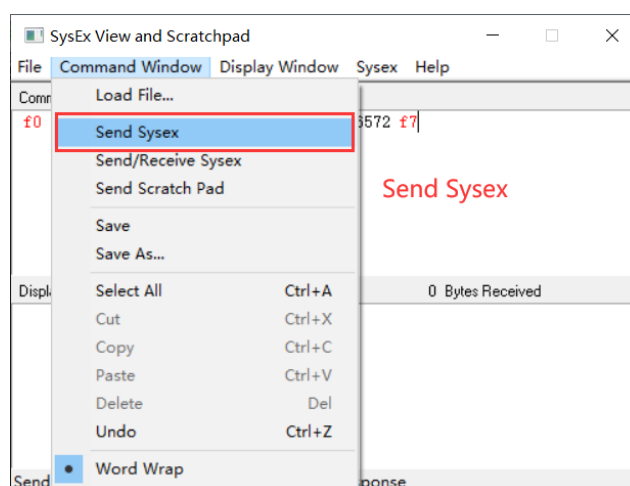
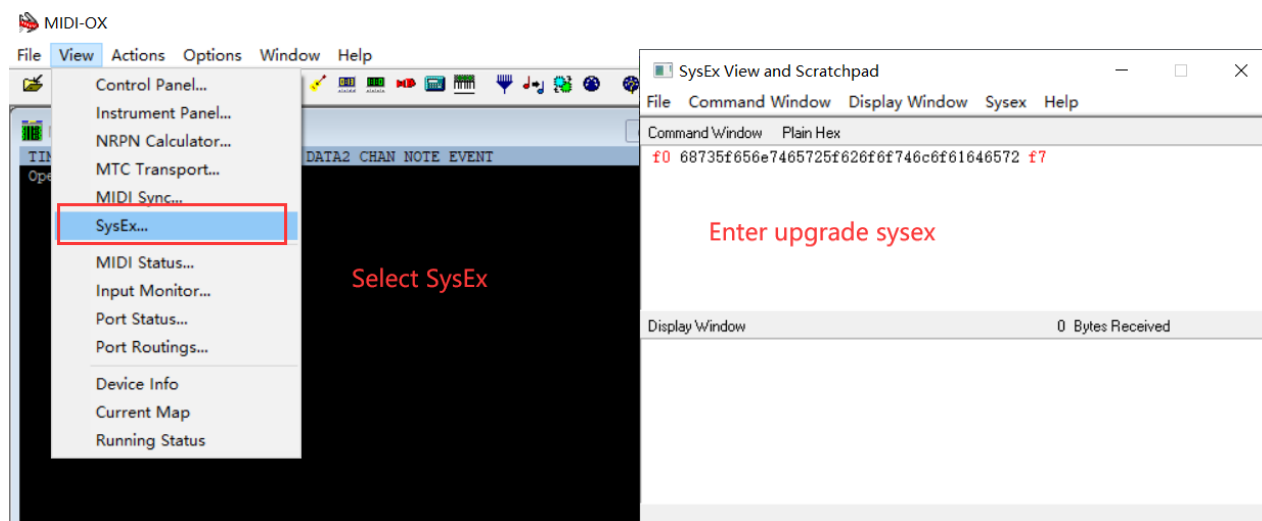


Step 5: Put MR-1 into upgrade mode

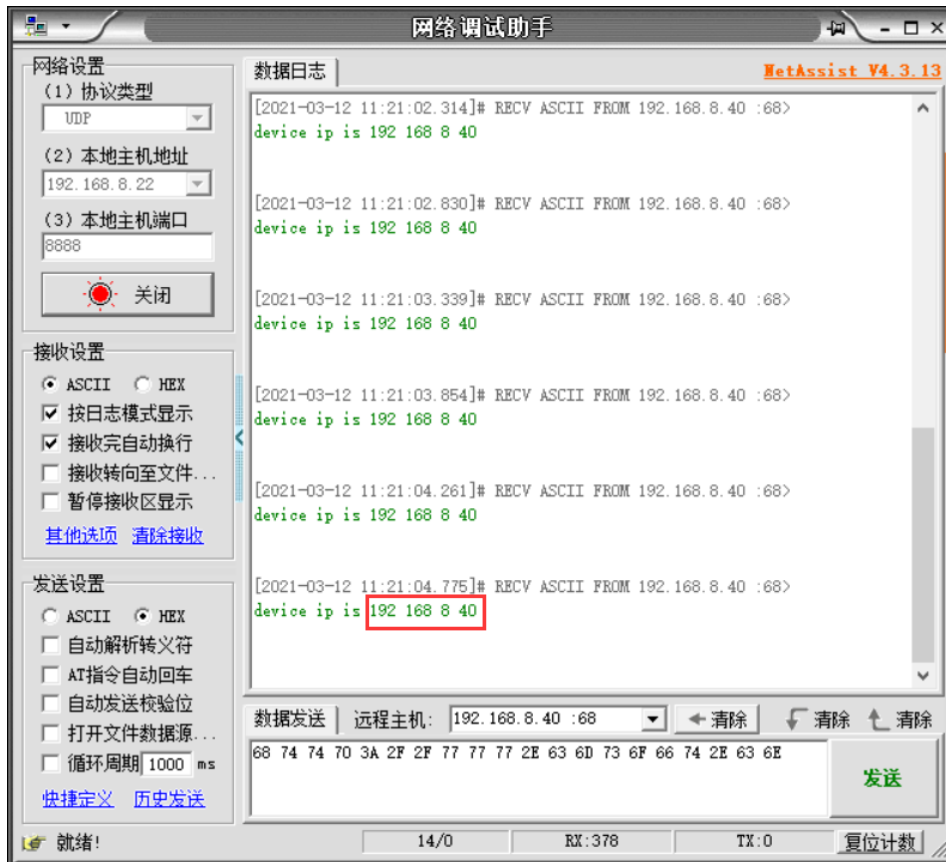
- Reopen the "MIDI-OX" software choose MR - 1 as a MIDI output.
(Note: MR-1 here is the name of the computer)



- Enter the upgrade command in SysEx: "f0 68735f656e7465725f626f6f746c6f61646572 f7".
- Click "Send Sysex", As shown:



- After successfully sending SysEx to the MR-1 box, the "NetAssist.exe" software will automatically receive the IP address.
- Enter the IP address into the "sscom.exe" software, and click connect.



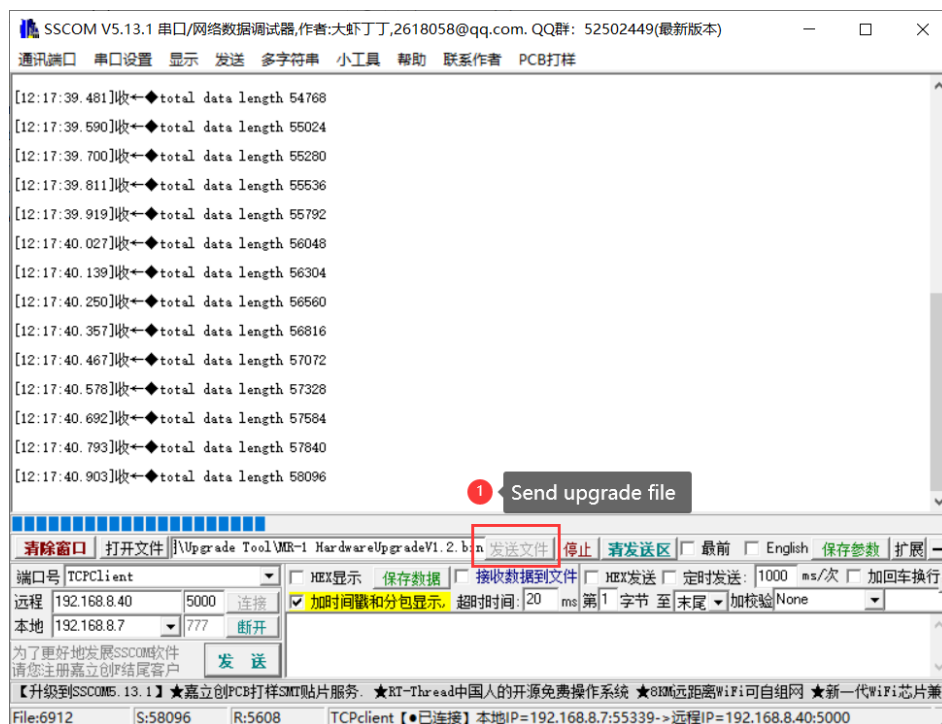
(Note 1: After the connection is successful, the button will turn gray.

Note 2: IP is dynamic, different from local area network.

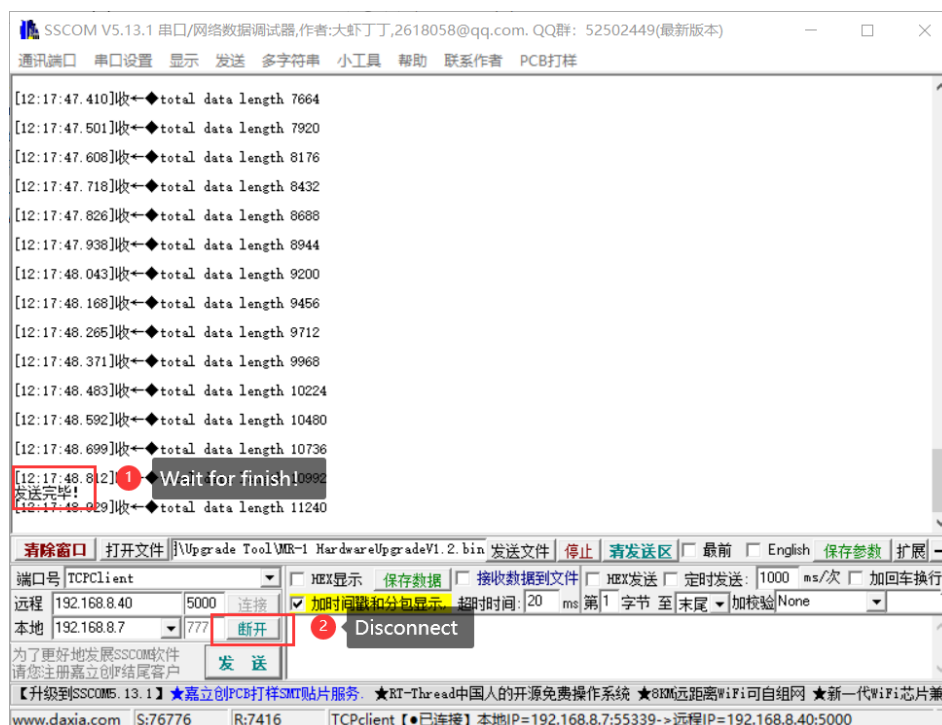
Note 3: At this time, the IP only has 30 seconds to input, after the time expires, the SysEx value needs to be sent again.)

Step 6: Send the upgraded firmware

- In the "sscom.exe" software, click "Send File".



- Wait for the sending to complete, click Disconnect (Be sure to click Disconnect)



Finally, power on the MR-1 again and the upgrade is complete!